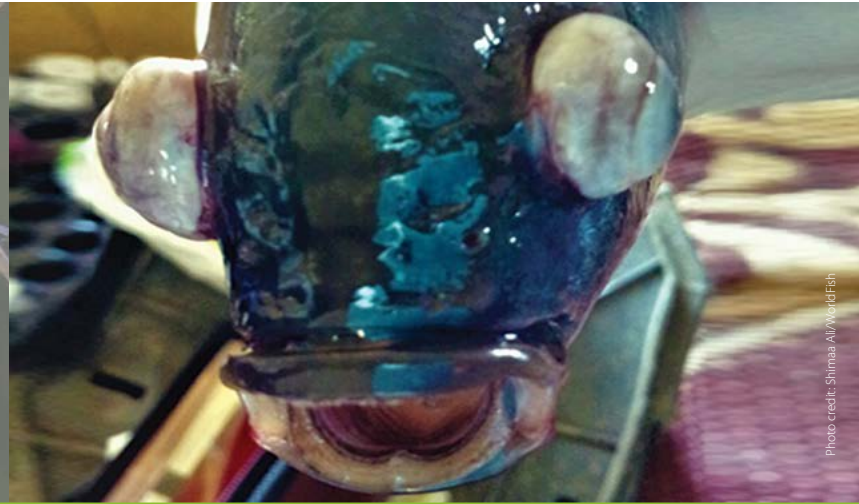


# Tilapia major clinical signs

The purpose of this poster is to enhance the capacity of hatcheries, nurseries, grow-out farmers and extension service providers to recognize and report tilapia diseases. Prevention, early recognition, diagnosis and rapid intervention are the best steps to manage aquatic animal diseases. If you observe clinical signs, abnormal behaviour and unusual mortality, contact your local aquaculture health professionals to report and ask for support.



**Fish lethargic at surface and not feeding**



**Eye exophthalmia/popeye**



**Eye endophthalmia/eye shrinkage**



**Eye opacification**



**Skin erosions hemorrhagic lesion**



**Skin discoloration**



**Open wounds**



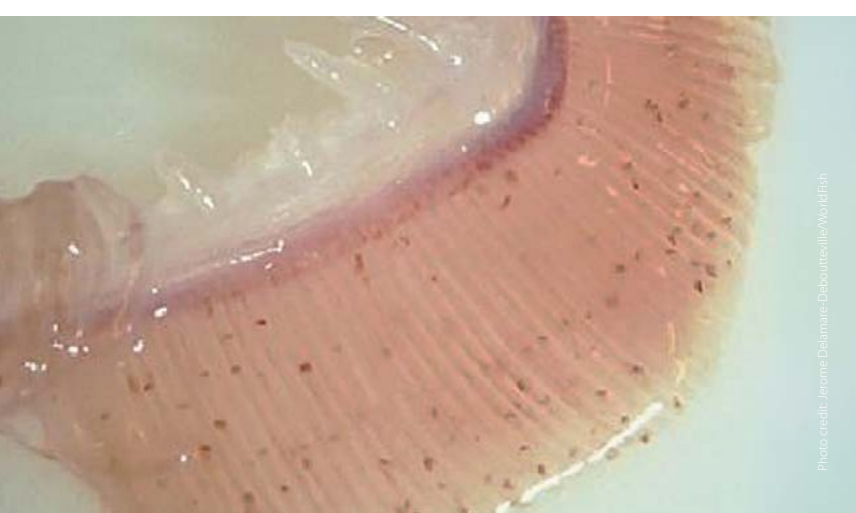
**Abdominal distension/swelling**



**Scale protrusion/detachment**



**Fish gasping air at the surface**



**Gill paleness (anemia)**



**Gill rot**



**Fin rot/tail rot**



**Swollen anus**

This tilapia disease extension material and photographs were developed by the CGIAR Research Program on Fish Agri-Food Systems (FISH) led by WorldFish. It was produced as part of the WorldFish better management practice (BMP) resources to support sustainable and responsible tilapia farming.