



Photo credit: WorldFish

# Nourishing island food systems in Solomon Islands: Operational Plan 2024

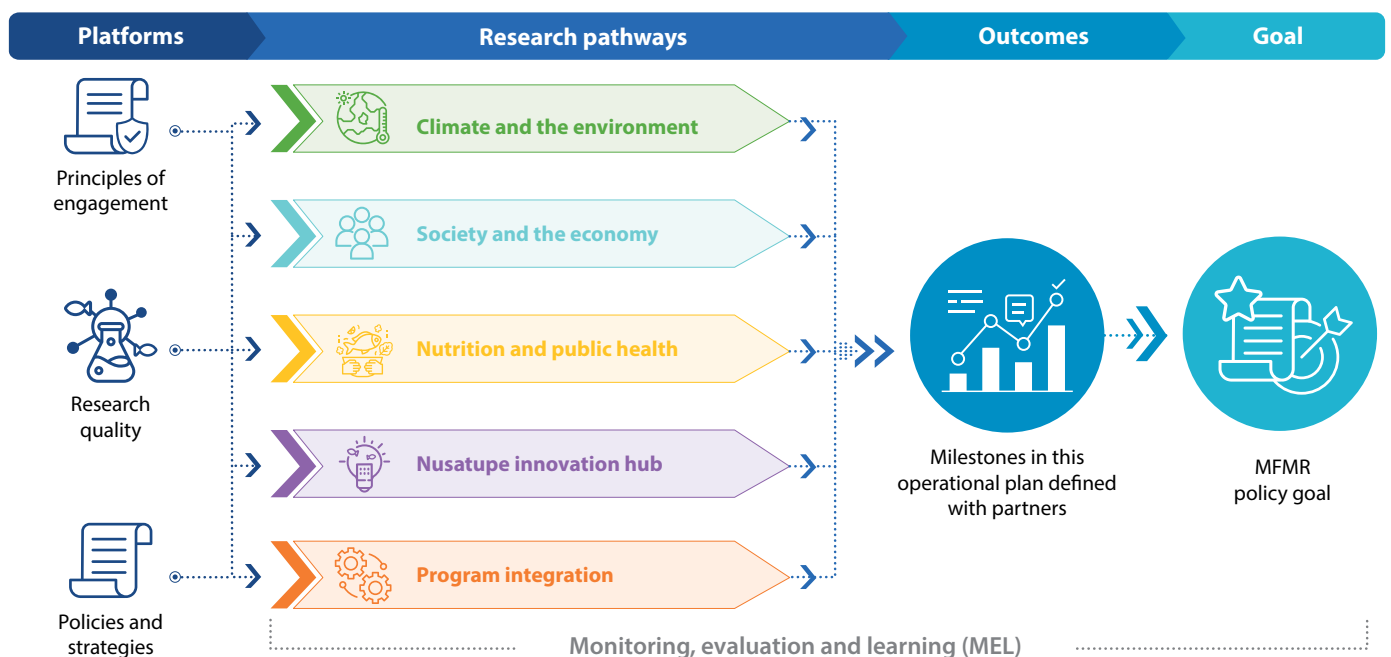


## Goal

WorldFish adopts the goal of the Solomon Islands National Fisheries Policy 2019–2029: A sustainable fisheries sector that contributes to the socioeconomic needs of all Solomon Islanders.

## Our program organization



The WorldFish program in Solomon Islands is organized around five research pathways (see figure). The first three pathways are the agreed-upon impact areas of WorldFish, which aligns with our adopted goal from the Solomon Islands National Fisheries Policy 2019–2029 of the Ministry of Fisheries and Marine Resources (MFMR) and the CGIAR Impact areas. The fourth research pathway is the innovation hub at Nusatupe Research Station, which responds to national demand for a facility to convene research, training and services with national and provincial partners. Finally, the fifth research pathway places a deliberate emphasis on integrated planning and partnerships. Although WorldFish in Solomon Islands has many partners, we particularly integrate our research with MFMR to support national strategies toward its policy goal.





## Review of the 2023 Operational plan

**Milestone evaluation** The 2023 Operational plan outlined 27 milestones that we sought to complete during the year. Here we provide a brief traffic light review of milestone completion organised by each of the four research pathways in our 2023 Operational plan. The fifth research pathway, the Nusatupe innovation hub, is an addition to the 2024 plan and is not reported on here. We also map our milestones to three impact pathways to scale research: Targeted **capacity development** (C), Science based **innovation** (I), and Advice on **policy** (P). These impact pathways are described in more detail later in the Operational plan but indicated here to gauge effort in these thematic areas.

In 2023 we completed 20 of the 27 milestones we set out for the program. Six milestones continue to be in progress and will be completed in 2024. Of these milestones there was a balanced effort between innovation and capacity development, but most activities were providing advice on policy. Please refer to the final section of this plan for a list of 2023 Outputs.

 <b>Climate and the environment</b>	 <b>Society and the economy</b>
<p><b>P</b> <b>Provincial staff trained in inclusive CBRM scaling.</b>  <b>Completed</b> PFO joins team for CBRM review, development of community management plans, inclusiveness of gender during meetings.</p>	<p><b>I</b> <b>Livelihood changes from solar freezers evaluated.</b>  <b>Completed.</b> Paper published summarising lessons on solar freezer participatory research:  <a href="https://doi.org/10.1111/apv.12383">doi: 10.1111/apv.12383</a></p>
<p><b>I</b> <b>Gaps in CBRM awareness identified and prioritized in a key report, and provincial regions with CBRM gaps reached through awareness trips by the MFMR and WorldFish.</b>  <b>Completed</b> (and on-going) Provincial Snapshot Report finalised and launched. CBRM awareness trips completed with MFMR/PFOs in Isabel and Malaita.</p>	<p><b>I</b> <b>Implemented co-designed research program on how fishery centres are used.</b>  <b>Completed</b> Four workshops held to develop understanding on how fishery centres are used: Foufo, Buala, Lata and Sasamunga. Activities at fishery centres are monitored in logbooks at Mala'u, Buala and Lata. Analyses to be completed in 2024.</p>
<p><b>C</b> <b>CBRM reviews conducted in communities (as per needs to be determined in 2023).</b>  <b>Completed</b> 3 CBRM reviews done in 2023 in Malaita</p>	<p><b>I</b> <b>Past fish handling training in Malaita evaluated.</b>  <b>Completed</b> Report published:  <a href="https://hdl.handle.net/10568/131394">https://hdl.handle.net/10568/131394</a></p>
<p><b>P</b> <b>Options papers generated on topical issues on specific local priorities for CBRM.</b>  <b>Completed</b> 2nd phase of CPUE data collection commenced in Oct 2023 with 7 Communities in Malaita. First National CBRM Network meeting facilitated by MFMR-WorldFish in Nov 2023. SPC Bulletin article on knowledge gaps: <a href="https://fame.spc.int/publications/bulletins/fisheries-newsletter/171">https://fame.spc.int/publications/bulletins/fisheries-newsletter/171</a></p>	<p><b>P</b> <b>New fish handling training developed with SINU &amp; training of trainers program piloted.</b>  <b>Completed</b> National report published based on 2022 PFO conference interviews and Fish Innovation reflection workshop. <a href="https://hdl.handle.net/10568/132122">https://hdl.handle.net/10568/132122</a>            Standardised 2-day fish handling training module in development by SINU. Piloting scheduled for January 2024.</p>
<p><b>P</b> <b>A capacity needs assessment conducted with government in relation to CBRM.</b>  <b>Completed</b> (and on-going) Seconded staff at MFMR continues to support CBRM Section. SPC Bulletin article on PFO capacity: <a href="https://coastfish.spc.int/en/component/content/article/538">https://coastfish.spc.int/en/component/content/article/538</a></p>	<p><b>C</b> <b>Skills among WorldFish and MFMR researchers developed in diverse community economies through ('floating coconut') livelihood mapping methods.</b>  <b>Completed</b> Workshop in Auki was attended by core team for fishery centre research: 5 WorldFish staff, 2 MFMR and 2 Malaita PFOs.</p>
<p><b>P</b> <b>Experiences of CBRM across contexts shared at learning events.</b>  <b>Completed</b> WorldFish, MFMR and PFOs hosted national learning events for cross provincial and community interaction and joined regional learning events hosted by donors and partners</p>	<p><b>P</b> <b>A compendium of briefs highlighting positive examples of fish-based livelihood innovations co-published with MFMR branding.</b>  <b>In progress</b> Briefs on solar freezers and smoked fish are completed. Plan to integrate briefs with fish handling training package/module in 2024.</p>
<p><b>I</b> <b>A report generated on options for inclusion of people with disabilities into CBRM through collaboration with civil society and government.</b>  <b>In progress</b> Draft paper on disability to be completed in 2024. WorldFish held meeting with Malaita Youth Council in 2023, workplan to be implemented in 2024.</p>	<p><b>I</b> <b>Fish distribution at the Auki market mapped, including aspects of how trading aquatic foods integrates with livelihoods.</b>  <b>Not completed.</b> Conceptualisation and drafting completed. Analyses ongoing. Milestone delayed until 2024.</p>

 <b>Nutrition and public health</b>		 <b>Program integration</b>	
<p><b>C</b> <b>Roles of rural food system actors in Solomon Islands defined.</b></p> <p><b>Completed</b> Documented in published program brief with Kastom Gaden Association (KGA): <a href="https://hdl.handle.net/10568/130704">https://hdl.handle.net/10568/130704</a></p>	<p><b>P</b> <b>Seconded provincial networking officer supporting MFMR provincial planning for PFO training and services.</b></p> <p><b>Completed</b> Secondment of staff member will continue in 2024</p>		
<p><b>P</b> <b>A KGA–WorldFish place-based forum hosted focusing on “island food systems in transition.”</b></p> <p><b>Completed</b> Forum held in Honiara 23 June attended by 30 participants representing indigenous academics and rural food system actors.</p>	<p><b>P</b> <b>Seconded data officer supporting the integration of CBRM scaling with socioeconomic and catch data.</b></p> <p><b>Completed</b> Secondment of staff member will continue in 2024</p>		
<p><b>P</b> <b>An advocacy campaign developed with KGA building on aquatic food outputs (e.g. a cookbook, video and nutrition guidelines).</b></p> <p><b>Completed</b> Advocacy events arranged in conjunction with island food system forum.</p>	<p><b>C</b> <b>The 2023 FishSMARD event hosted with the MFMR, as well as partners from Vanuatu and Kiribati.</b></p> <p><b>Completed.</b> Hosted in Wollongong in February, led by WorldFish staff.</p>		
<p><b>P</b> <b>Proceedings of a forum published through post-forum follow-up discussions and co-authorship.</b></p> <p><b>Completed</b> Proceedings published as brief: <a href="https://hdl.handle.net/10568/135438">https://hdl.handle.net/10568/135438</a></p>	<p><b>C</b> <b>Strengthened the post-graduate program with SINU and the Australian National Centre for Ocean Resources and Security at the University of Wollongong.</b></p> <p><b>Completed.</b> Four Solomon Islander PhD students enrolled at ANCORS (three linked with WorldFish projects).</p>		
<p><b>P</b> <b>A cookbook published featuring indigenous and aquatic food recipes from all provinces.</b></p> <p><b>In progress</b> Recipes, stories and photos compiled. Editing and layout to be completed in 2024.</p>	<p><b>C</b> <b>Progress made at the Nusatupe Island Food System Innovation Hub.</b></p> <p><b>Completed.</b> Partner discussions held. KGA established a demonstration food garden; and coral restoration, seaweed and aquaponic trials commenced. Progress summarised in published brief: <a href="https://hdl.handle.net/10568/135437">https://hdl.handle.net/10568/135437</a></p>		
<p><b>I</b> <b>Nutrition trade-offs with cold storage in rural communities evaluated.</b></p> <p><b>In progress</b> Analyses completed in 2023 and writing ongoing; to be published in 2024.</p>	<p><b>P</b> <b>Quarterly updates sent to partners about WorldFish program implementation and milestone tracking.</b></p> <p><b>Not completed.</b> Partners were updated in other ways: Research activities implemented together with MFMR on a regular basis. Quarterly meetings carried out in Western Province. Provincial Government meetings held by Country Lead. To be reconsidered for 2024.</p>		
<p><b>C</b> <b>A training package on nutrition guidelines with aquatic foods developed.</b></p> <p><b>In progress</b> Training package deferred to 2024 and to be integrated with training at Nusatupe innovation hub.</p>			

### Highlights:

1. We made significant progress in areas of fish handling working with MFMR, SINU and PFOs. Several outputs and ongoing activities create a strong foundation for further development in this area during 2024.
2. We created a national platform for Indigenous foods and integrated aquatic foods in the tok stori format about countering unhealthy island food system trends. This development will continue at the provincial level in 2024.
3. We established the innovation hub for island food systems at Nusatupe Research Station. The hub will continue to grow in 2024 and is now a major feature in our growing collaboration with KGA and Western Province Government.
4. We concluded several data collection activities in coastal fisheries and CBRM which we will create outputs from in 2024 to evaluate options for cost-effective CBRM scaling.
5. We developed the concept of island food system. In 2024, we are creating a new WorldFish Program on Island Food Systems. The program will have a regional emphasis on the Pacific, and greater integration of the WorldFish island programs in Solomon Islands and Timor-Leste.

# The 2024 Operational plan

## Platforms

To be a locally impactful and globally relevant organization we stand on platforms that combine national and international structures, place emphasis on multidimensional research quality, and take a deliberate approach to “how” we work. The platforms provide our purpose and core values.

## Policies and strategies



The strategic context for WorldFish’s engagement in Solomon Islands and the Pacific Island region is provided by a range of external and internal planning documents and processes. WorldFish in Solomon Islands is mostly guided by our partners and the country’s national plans and strategies, such as the Solomon Islands National Fisheries Policy 2019–2029 of the MFMR.

In addition, we take guidance from the National Environment Management Strategy 2020-2023 of the Ministry of Environment, Climate Change, Disaster Management and Meteorology (MECDM); the Solomon Islands National Oceans Policy (SINOP) of the Ministry of Foreign Affairs and External Trade; and the National Food Security, Food Safety and Nutrition Policy 2019-2023 of the Ministry of Health and Medical Services, Ministry of Agriculture and Livestock, Ministry of Education and Human Resources Development, and MFMR. Regional plans and inter-governmental agreements such as the Noumea Coastal Fisheries Strategy also guide our work.

Internally, the WorldFish 2030 Research and Innovation Strategy provides the basis for how we engage, our ambitions and how we measure progress. At a higher level, our program in Solomon Islands is also guided by the CGIAR Strategic Results Framework, which emphasizes development outcomes from research and is aligned to the global targets on sustainable development.

These strategic documents provide both a platform for our work—“what we do”—and the outcomes we seek—“why we do it.”

## Research quality



WorldFish places the highest emphasis on quality research by following the CGIAR Frame of Reference of Quality of Research for Development:

Dimension	Requirement
<b>Relevance</b>	Learning that is aligned with national and regional priorities and incorporates stakeholder engagement in planning.
<b>Scientific credibility</b>	Dependable and sound knowledge that is logically interpreted and gained from a rigorous method and evaluated in peer review.
<b>Legitimacy</b>	Ethical and fair representation of all involved and sensitive to the perspectives of contributors and intended users.
<b>Effectiveness</b>	Knowledge, products and services that have high potential to address a problem and contribute to innovations and solutions.

## Principles of engagement



WorldFish follows a set of guiding principles of engagement for quality research in Solomon Islands:

1. Be transparent: WorldFish will be transparent with our partners about intentions and impacts, including communities where we work.
2. Be accountable: WorldFish will be predictable and accountable in planning with our partners, including communities where we work.
3. Be inclusive: WorldFish will actively seek input and participation from all without bias in hierarchy, gender, religion or ethnicity.
4. Be committed: WorldFish will form mutually beneficial partnerships with national agencies and communities built on non-extractive research and a long-term commitment to people and places.

Adhering to these guiding principles is critical for WorldFish to continue to enjoy the trust of our partners and a wholesome reputation and image in Solomon Islands.

## Partnerships and impact pathways

WorldFish in Solomon Islands works closely with key partners to enable impact at scale:

**MFMR and Provincial Governments** The 2015 Fisheries Management Act specifically emphasises the central role of Provincial Governments, and in effect mandates Provincial Fisheries Offices (PFOs), to ensure sustainable fisheries and development of the aquatic foods sector, under the coordination of MFMR. Our research program seeks to strengthen the services that PFOs delivers, and the strategies that that MFMR implements to enable these services.

**SINU** Solomon Islands National University is the national knowledge creator and educator. Programs at SINU are recognised for their strong technical capacity, such as the fish handling and processing work at the Department of Fisheries Studies. Our research program works in collaboration with SINU to complement and strengthen national science capacity.

**Training and extension networks** There are several well-established national networks for vocational training and peer-to-peer systems of capacity development. We specifically invest in partnership with Kastom Gaden Association (KGA) and its network of trainers as a complementary pathway to that of PFOs. Integrating awareness and trainings on aquatic foods as part of an effort to elevate Indigenous foods with KGA is one example. In addition, rural training centres (RTCs) provide vocational training in rural areas where most people in Solomon Islands live.

**Other provincial actors** An increasingly recognised feature of the system we define and engage in is the role of youth and provincial youth councils. With provincial partners we are seeking to build the capacity of a new generation of Indigenous food innovators and CBRM champions.

Scaling of our research and innovation activities occurs through three main impact pathways, as described by CGIAR's 2030 Research and Innovation Strategy:

(I) Science-based **innovation** — co-development of sets of knowledge products, technologies, services, and other solutions. For example, in Solomon Islands we have a focus on evaluating strategies and trainings for enhancing effectiveness of CBRM, investments in fish-based livelihoods, fish handling and processing practices with our partners.

(C) Targeted **capacity development** — working with individuals, institutions, and organizations — designed to improve the utility and use of technological and institutional solutions. Activities include training-of-trainers, development of training programs and ongoing institutional support to national partners.

(P) Advice on **policy** — including business strategies, institutional arrangements, and investment programs, together with more formal public policy sector instruments. This work aims to help public and private sectors to improve the enabling environment for scaling of innovations, particularly to reach communities.



## Research pathways

### Climate and the environment



Aquatic foods are prevalent in the diets of Solomon Islanders, and fish is the most accessible and widely consumed animal-source food. With increasing and urbanizing populations, it is a national priority to secure a sustainable supply. As such, community-based resource management (CBRM) is now the adopted national model for supporting greater sustainability and benefits from coastal fisheries. In support of this model, WorldFish works with the MFMR to improve the practice of inclusive CBRM and supporting methods for scaling with provincial governments to reach more communities with information and awareness about these practices. Island food systems are places governed with strong community and traditional institutions. We have yet to see a more promising innovation for securing inclusive and sustainable management than CBRM. As such, we will work to evaluate practices and support the national priorities of scaling CBRM through information, awareness and training activities.

2024 Milestone		Application
<b>P</b>	Report published on cost of CBRM scaling based on experiences working in partnership with Malaita PFOs.	To guide government and partner investment decisions in CBRM scaling options with a focus on the role of PFOs.
<b>P</b>	Report published on options for inclusion of people with disability in CBRM via civil society and government.	To support national staff with more and new information on options for including people with disabilities, who have been identified as among those marginalized from decision-making.
<b>C</b>	Implementation of new workplan with Provincial Youth Council in Malaita on youth awareness and leadership in CBRM.	To promote youth engagement in CBRM and ensure communities have the information they need to manage their resources.
<b>I</b>	Interaction of culture and change, gender roles in matrilineal contexts explored in report and workshop with Isabel Provincial Government, PFOs and other stakeholders based at Buala.	To support national staff with new information on intersections between culture and CBRM.
<b>C</b>	Lessons from experiences of training provincial fisheries staff in CBRM evaluated and documented.	To guide future training initiatives involving provincial fisheries officers in Solomon Islands and beyond.
<b>P</b>	Review of the Solomon Islands National CBRM Strategy 2021–2025 conducted with MFMR.	To inform the development of a new Solomon Islands National CBRM Strategy post-2025.
<b>C</b>	Stories demonstrating benefits of CBRM produced and disseminated at community level with maps produced for successful management areas.	To share positive examples of CBRM as a potential catalyst for new interest and ideas in other places.
<b>I</b>	CPUE data collection finalized and the Malaita Fisheries Profile report published.	To inform and enable provincial government to have fisheries data available to share with MFMR and potential partners for funding purposes.
<b>I</b>	Existing information about nature-based aquaculture in Solomon Islands compiled in a key report, and project design completed with SINU, KGA, MFMR and MECMD.	To explore existing and potential nature-based and nature-positive options for securing sustainable supply of aquatic foods.

### Society and the economy



In Solomon Islands, per capita aquatic food consumption is 73 kg. Almost everyone eats fish regularly, though most people are not fishers. The system of producing and distributing fish connects practices of production with features of food environments, and it generates indispensable value, both as features of livelihoods for the many people involved and for food and nutrition security in island populations. Island food systems are places of local innovation with aquatic food practices. WorldFish works with the MFMR, provincial governments, the SINU and training providers to support innovation in these systems of distribution by improving skills in fish handling and in demonstrating innovative practices and then evaluating them. A key action component of this work is to design practical fish handling and processing upskilling activities that are accessible to communities.

2024 Milestone		Application
<b>C</b>	An additional three briefs published in a compendium highlighting positive examples of fish-based livelihood innovations.	To make available simple information demonstrating innovation in aquatic food systems as a potential catalyst for sparking new ideas in new places.
<b>I</b>	Fish distribution at Auki market mapped and characterized in a scientific publication, including aspects of how trading aquatic foods integrates with livelihoods and nutrition.	To guide prioritization of formal food environment planning and sustainability activities in the Auki area.

2024 Milestone		Application
I	Evidence of how fishery centers are used, based on logbook records collected in 2023–24, validated through workshop(s) and documented.	To evaluate economic activities at fishery centers to guide government service planning and delivery.
P	National assessment of fishery centers and their services in Solomon Islands published with MFMR.	To evaluate economic activities at fishery centers to guide government service planning and delivery.
I	The multidimensional benefits and challenges experienced by participants in livelihood development case studies in Solomon Islands (and Timor-Leste) documented in a scientific publication.	To guide investment decisions by government and partners in fisheries and coastal livelihood development policy, programs and projects.
C	Training module on fish handling and processing, with accompanying materials, completed in partnership with SINU.	To incorporate fish handling and processing upskilling activities into partners' services with communities and associations, such as provincial fisheries officers' extension, KGA and RTCs.
I	The concept of a youth-focused Fis Bisnis planned and piloted in Auki, Malaita Province.	To test an innovation for upskilling fish handling and processing practices and to promote involvement of youth in fisheries.
P	Support provided to MFMR to prepare a national fish handling and processing strategy.	To guide implementation of a national program on upskilling in fish handling and processing in Solomon Islands and to direct future investment by government and partners.

## Nutrition and public health



Island food systems are undergoing change. Outside of the village, it can be difficult and expensive to transport and distribute highly perishable fresh foods from the garden or sea to consumers. This is a driving factor behind the influx and acceptance of refined foods like rice and flour or convenience foods with a long shelf-life, all of which paradoxically tend to outcompete domestically grown crops and fish in price, access and availability in urban settings.

Shifts from domestic production of nutritious crops to imported, nutritionally unrewarding foods is symbolic of a contemporary transition to “modern” and convenient foods that has been underway for some time, with severe public health consequences. To counteract current food system trends, WorldFish works with community partners and training providers to strengthen and advocate for traditional practices and indigenous foods. We will support the strengthening of traditional food practices and integrate aquatic foods with partners that focus on advocacy and training in traditional agriculture and indigenous foods.

2024 Milestone		Application
P	A cookbook published featuring indigenous and aquatic food recipes from all provinces.	To celebrate and exemplify indigenous foods and traditional practices that support healthy island food systems.
I	Nutrition trade-offs with cold storage in rural communities evaluated in a scientific publication.	To guide nutrition-sensitive service planning.
C	A training package on aquatic foods for nutrition developed for PFOs, women and youths.	To include nutrition-sensitive information in fisheries activities and training of community-based fisheries staff to improve practices.
P	Provincial-level Indigenous food systems forums held in Western and Isabel Provinces, in partnership with KGA, with documented proceedings.	To synthesize diverse perspectives from the Provinces to co-produce sustainable and nutrition-sensitive development pathways for island food system futures
P	Provincial-level advocacy campaigns promoting Indigenous and aquatic foods held in partnership with KGA.	To promote healthy and sustainable island diets that are built from traditional practices and indigenous aquatic foods.
I	Lessons on partnerships co-published with KGA.	To document the benefits and challenges of integrating aquatic foods into rural agricultural training networks.
C	Training workshops on nutrition, agriculture and fish handling and processing held at Nusatupe innovation hub, in partnership with KGA.	To train at least 50 women, men and youth in skills relating to nourishing and climate resilient island food systems

## Nusatupe innovation hub



The WorldFish Nusatupe Research Station, situated in Western Province of Solomon Islands, is becoming established as an innovation hub dedicated to showcasing nourishing, sustainable and climate-resilient island food systems. WorldFish is transforming the station in response to national demand for a facility to convene research, training and services. The innovation hub integrates with WorldFish's existing partnerships with key national stakeholders, including the MFMR, Western Provincial Government, SINU, KGA, RTCs and island communities. The hub is serving as a focal point for harmonizing the efforts of these stakeholders and aligning their objectives towards the common goal of establishing sustainable and climate-resilient island food systems. At Nusatupe we are convening co-learning and reflection activities, as well as trainings and demonstrations. Several WorldFish project training and workshop activities, and those of our key partners, are planned to be implemented at Nusatupe during the year. The innovation hub is becoming a central pathway for the WorldFish program to include training, demonstration, co-learning and research on island food systems.

2024 Milestone	Application
<b>C</b> Western PFOs regularly hosted at the research station office and supported to develop a Western PFO Strategy, with guidance from Malaita PFOs.	To strengthen partnerships with provincial-level fisheries officers and support cross-provincial learning.
<b>I</b> A Nusatupe Innovation Hub Strategy developed in collaboration with key partners.	To guide planning and priorities for the Nusatupe Innovation Hub for the next five years.
<b>C</b> Demonstrations at the research station established with partners: food gardens, coral restoration, seaweed farming and aquaponics.	To provide examples of innovations in aquatic food systems to use in training and workshops with students, PFOs and community members.
<b>C</b> High school students hosted for look and learn sessions.	To provide an engaging space reaching at least 50 young Solomon Islanders to learn about coral biology, CBRM, nutrition and fish-based livelihoods.
<b>C</b> Four training workshops held at the research station.	To increase knowledge and skills on community-based resource management, nutrition, and fish handling and processing among fishers, students, fisheries officers and others.
<b>C</b> A Youth Internship Program developed and completed by 15 youths.	To provide learning and internship opportunities for Solomon Islander youth.
<b>I</b> A Monitoring Evaluation and Learning program designed and implemented for the Nusatupe Innovation Hub.	To learn and improve operations and activities offered at the Nusatupe Innovation Hub.


## Program integration



WorldFish will work along the principles of engagement seeking to be the research partner of choice in Solomon Islands and will act as a research-practice-policy interface contributing to national learning events and making dissemination products accessible for uptake. High-quality research to provide sustainable development solutions in aquatic food systems requires a deliberate theory to apply it at scale. One frequently defined pathway in theories of change for scaling research innovation is through partnerships. We seek to make our research impactful by working in partnership with national research entities, training providers and government services (see section above on impact pathways for our key partnerships). Our national host is the MFMR, which has undergone a significant increase in operational capacity over the past 10 years. Together, we have taken steps to integrate research on aquatic food systems within national development trajectories by co-designing and co-implementing our program of work. We integrate by planning all research activities together to support the MFMR's CBRM strategy and the 2015 Fisheries Management Act, and by sharing and promoting our research together. In 2024, two WorldFish staff will continue to be seconded to the MFMR to focus on supporting data management and coordinating provincial fisheries services.

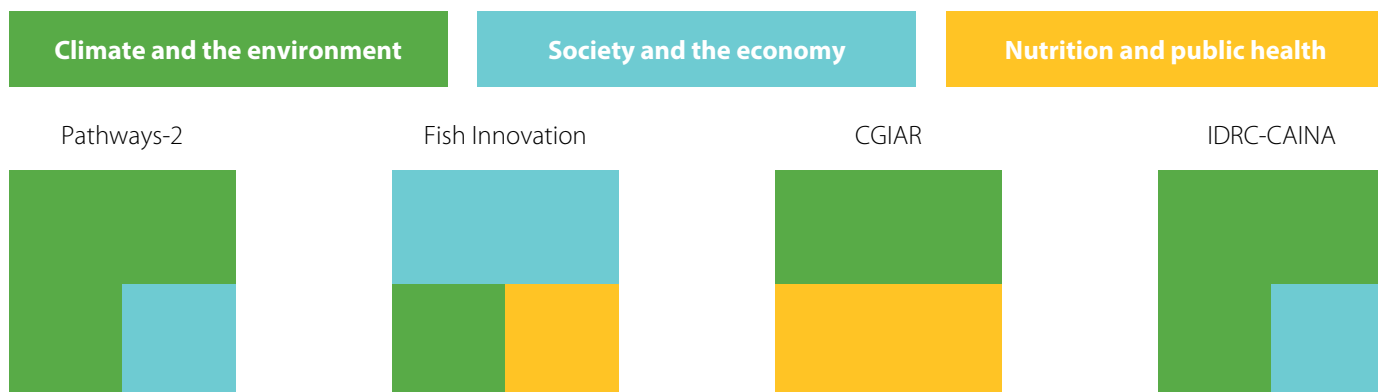
2024 Milestone	Application
<b>C</b> Seconded provincial networking officer supporting MFMR provincial planning for PFO training and services.	To coordinate and support provincial activities for effective service delivery supporting the 2015 Fisheries Management Act.
<b>C</b> Seconded data officer supporting the integration of CBRM scaling with socioeconomic and catch data.	To collate and organize multiple data sources for oversight and strategic planning in policy and implementation.
<b>P</b> Summary report on experiences of WorldFish staff secondment to MFMR published.	To evaluate effectiveness of secondment and experienced benefits.
<b>C</b> MFMR making regular updates to and using the CBRM database.	To transfer ownership of data and decision-making tools to the government.
<b>P</b> MFMR supported to update its gender strategy.	To guide national gender work in the fisheries sector.



2024 Milestone	Application
 Solomon Islander experiences of CBRM shared with representatives from Kiribati and Vanuatu at the 2024 FishSMARD event.	To enable effective collaboration and coordination among partners, with increased capacity to adjust and implement coastal fisheries service models improved through regional information sharing.

## Delivering 2024

Our program is made up of three projects and a CGIAR Initiative investment. These investments map onto our three agreed-upon impact areas of WorldFish, which we define as our three research pathways.



In addition to these contracted projects we have one high probability project expected to start in July 2024 to support the growth of Nusatupe innovation hub for island food systems, and one proposal in development to further strengthen the program on scaling CBRM with partners. During 2024 WorldFish will also develop work for the next generation of CGIAR Initiatives.

## Monitoring, evaluation and learning

For the Operational Plan to be effective, it must be monitored and tracked against milestones to learn and adjust critical issues in a timely manner. WorldFish uses a CGIAR-developed web-based knowledge sharing and monitoring, evaluation and learning (MEL) platform. The platform is used as a tool to ensure responsible and adaptive program operations and includes the tracking of indicators to assess overall progress toward objectives and targets in the program. In monitoring outcomes, methods are employed to capture distributional effects of activities on different groups, including disaggregation by age and gender.

## The WorldFish Solomon Islands team

The WorldFish program in Solomon Islands is led by the country director and a senior scientist who are responsible for delivering this Operational Plan. The team is made up of 15 staff members working at three offices. We have a national headquarters in Honiara at Ace Complex in Kukum. We operate the Nusatupe research station at Gizo in Western Province, which is now an active innovation hub demonstrating a nourishing, sustainable and climate-resilient island food system. We also have a field office in Auki, Malaita. Our team is made up of national research staff trained and skilled in community facilitation and research methods attuned to the research pathways in the Operational Plan. We have five PhD-level staff and three MSc-level staff in the program, as well as international PhD-level scientists through our international program on island food systems. The research team is supported by program administration support staff in Solomon Islands and the Project Management Unit at WorldFish Headquarters in Penang, Malaysia.



## 2023 Outputs WorldFish Solomon Islands Program

Output	Type	Link
Island food systems in transition: Strengthening Indigenous food systems in Solomon Islands	Brief	<a href="https://hdl.handle.net/20.500.12348/5540">https://hdl.handle.net/20.500.12348/5540</a>
Imagining island food system futures with Indigenous foods: A tok stori on the origins and potential of traditional food systems in Solomon Islands	Brief	<a href="https://hdl.handle.net/20.500.12348/5714">https://hdl.handle.net/20.500.12348/5714</a>
Establishing the WorldFish Nusatupe Research Station as an innovation hub for island food systems	Brief	<a href="https://hdl.handle.net/20.500.12348/5713">https://hdl.handle.net/20.500.12348/5713</a>
A review of fish-handling training activities in Malaita Province	Report	<a href="https://hdl.handle.net/20.500.12348/5594">https://hdl.handle.net/20.500.12348/5594</a>
National assessment and planning for improved fish handling in Solomon Islands	Report	<a href="https://hdl.handle.net/20.500.12348/5631">https://hdl.handle.net/20.500.12348/5631</a>
National assessment of the Solomon Islands food system	Report	<a href="https://hdl.handle.net/20.500.12348/5799">https://hdl.handle.net/20.500.12348/5799</a>
Pacific food systems: The role of fish and other aquatic foods for nutrition and health	Report	<a href="https://hdl.handle.net/20.500.12348/5545">https://hdl.handle.net/20.500.12348/5545</a>
What can the experiences of rural women in Solomon Islands teach us about innovation in aquatic food systems?	Journal article	<a href="https://hdl.handle.net/20.500.12348/5605">https://hdl.handle.net/20.500.12348/5605</a>
Knowledge and information gaps in fisheries management among indigenous communities in Solomon Islands	Journal article	<a href="https://purl.org/spc/digilib/doc/rvbnz">https://purl.org/spc/digilib/doc/rvbnz</a>
Research perspectives on Pacific Island coastal fisheries	Journal article	<a href="https://purl.org/spc/digilib/doc/ghe23">https://purl.org/spc/digilib/doc/ghe23</a>
Opportunities to Strengthen Fish Supply Chain Policy to Improve External Food Environments for Nutrition in the Solomon Islands	Journal article	<a href="https://hdl.handle.net/20.500.12348/5792">https://hdl.handle.net/20.500.12348/5792</a>
Fruit and Non-Starchy Vegetable Acquisition and Supply in Solomon Islands: Identifying Opportunities for Improved Food System Outcomes	Journal article	<a href="https://hdl.handle.net/20.500.12348/5791">https://hdl.handle.net/20.500.12348/5791</a>
Food price and availability in Solomon Islands during COVID-19: A food environment survey	Journal article	<a href="https://hdl.handle.net/20.500.12348/5790">https://hdl.handle.net/20.500.12348/5790</a>
Decadal characteristics of small-scale fishing livelihoods in 13 Pacific Island Countries and Territories	Journal article	<a href="https://hdl.handle.net/20.500.12348/5803">https://hdl.handle.net/20.500.12348/5803</a>

### Citation

This publication should be cited as: Eriksson H, Aloysius A, Batalofo M, Bennett G, Harohau D, Hunnam K, Leinga G, Orirana G, Pua'ara S, Siota F, Sukulu M, Tutuo J, Vaike L and Saeni-Oeta J 2024. Nourishing island food systems in Solomon Islands: Operational Plan 2024. Penang, Malaysia: WorldFish. Operational Plan: 2024-09.

### Creative Commons License



Content in this publication is licensed under a Creative Commons Attribution-NonCommercial-NoDerivatives 4.0 International (CC BY-NC-ND 4.0), which permits non-commercial re-use, distribution, and reproduction in any medium, provided the original work is properly cited, and is not altered, transformed, or built upon in any way.

© 2024 WorldFish.

For more information, please visit [www.worldfishcenter.org](http://www.worldfishcenter.org)